

ADDENDUM

BIODEX EMG/ANALOG SIGNAL ACCESS CONFIGURATION UTILITY SOFTWARE

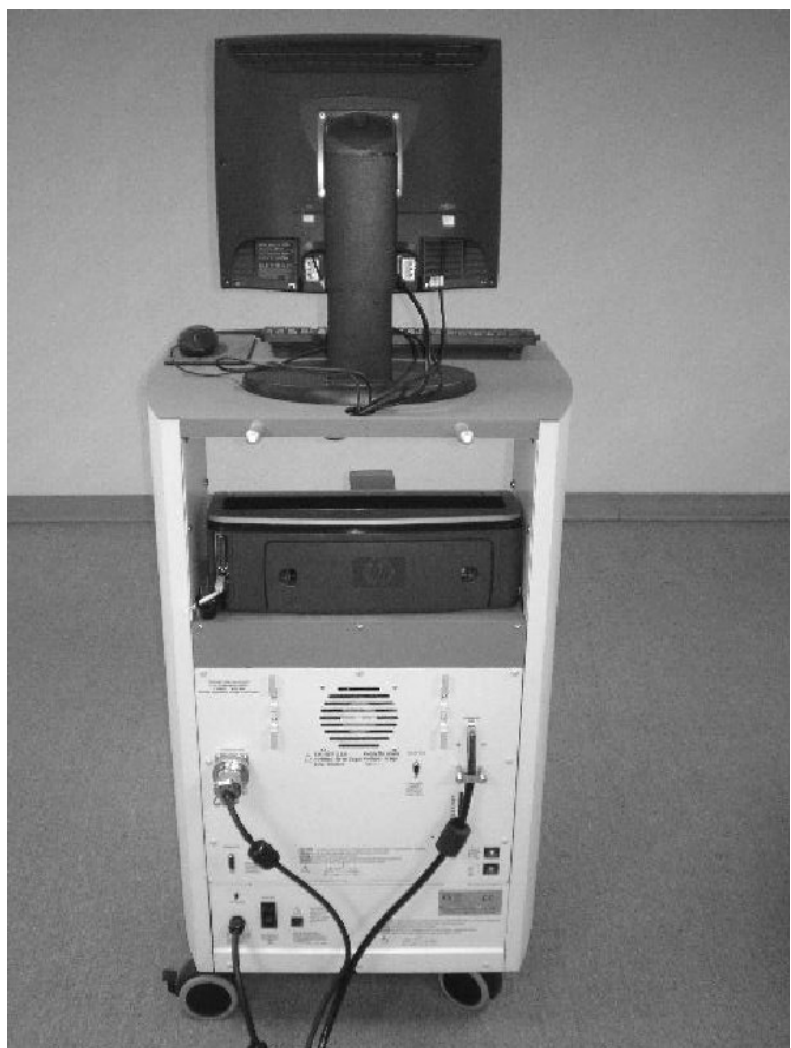
FOR SYSTEM 3 REVISION 2 AND SYSTEM 4 DYNAMOMETERS

830-000

835-000

840-000

850-000



BIODEX
Biomedex Medical Systems, Inc.

20 Ramsey Road, Shirley, New York, 11967-4704, Tel: 800-224-6339 (Int'l 631-924-9000), Fax: 631-924-9241, Email: info@biomedex.com, www.biomedex.com

This manual contains operating procedures for the following Biomed products:

830-000 System 3 QUICK-SET
835-000 System 3 PRO
840-000 System 4 QUICK-SET
850-000 System 4 PRO

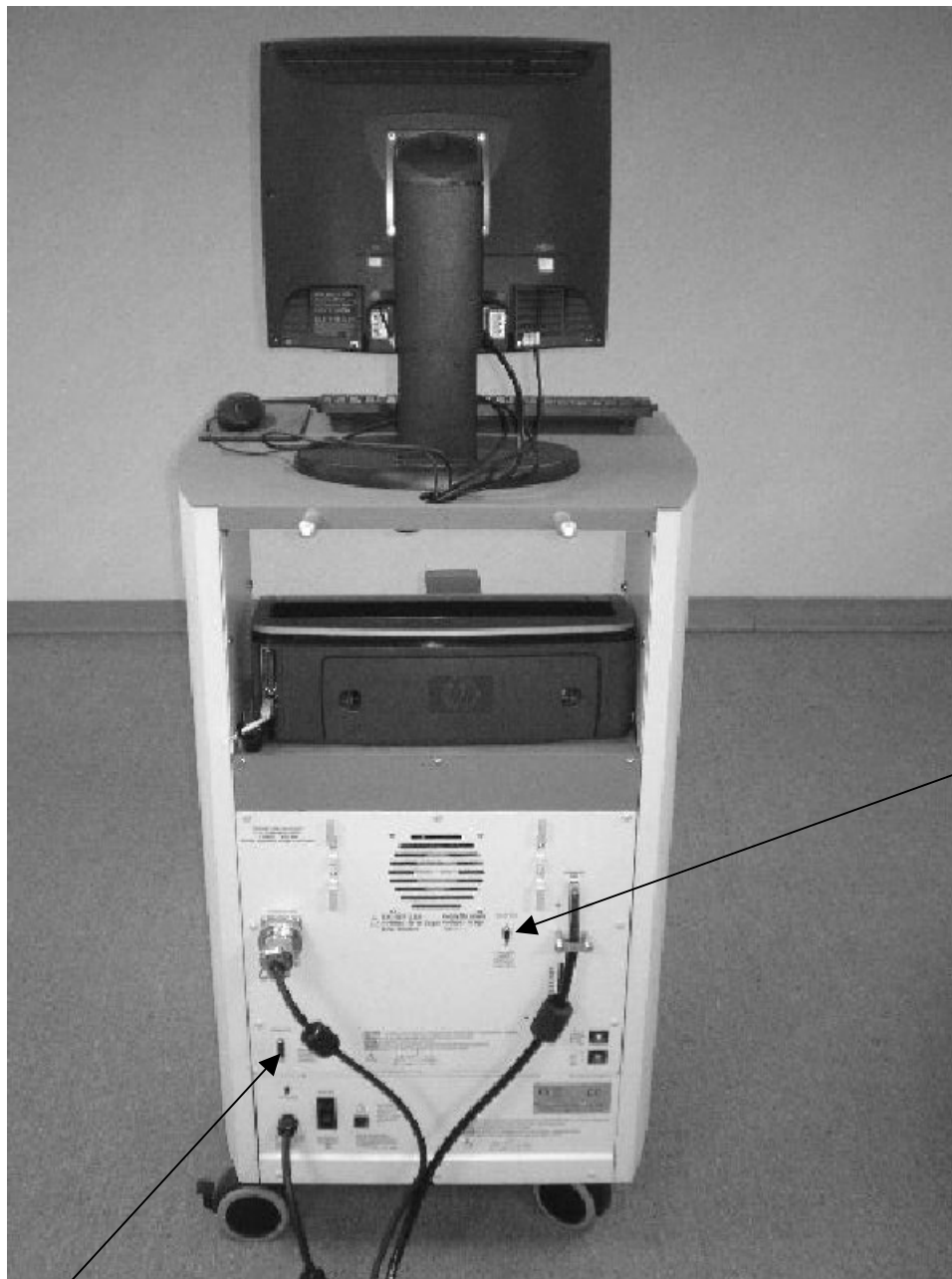


Need Help?
Contact Biomed Software Support
1-800-224-6339 ext 2120,
or softwaresupport@biomed.com

Table of Contents

CHAPTER 1 - Overview	4
CHAPTER 2 - Installation	6
CHAPTER 3 - Operating Modes	11

1. Overview



Auxiliary RS 232 for
RTK interface

Remote Access for Analog Signals

The EMG/Analog Signal Access Utility (ASA Utility) is part of the EMG/Analog Signal Access Interface option for System 3 and System 4, Rev 2 dynamometers. The utility configures the scale factors and operating modes of the analog signal outputs for velocity, torque and position.

With the configuration capability, the analog signals can be custom tailored to provide the best and most appropriate analog data for a wide variety of usages.

The ASA Utility must be installed on the System 3 or 4 computer, which runs the Biodex application software. Insert the provided ASA Utility CD into the CD drive, and it will automatically start the setup installation. If all the defaults are chosen during setup, a shortcut will be created on your desktop called: System 3 ASA Config.

The utility cannot be run simultaneously with the Biodex application. Typically you must exit the Biodex application, run the ASA Utility to setup the scaling and modes, and then run the Biodex application to perform your tests and data capture.

Through the Remote Access port is an output of analog signals of velocity, torque and position data in real-time directly from the motor control Digital Signal Processor (DSP). In addition to the real-time data, a synchronization pulse is issued whenever the real-time data is updated. The synchronization pulse can be used by the monitoring equipment to know when the real-time data output has changed.

A System 3 Rev2 or 4 is ready to output the analog signals of torque, position and velocity through the RS-232. This software utility manages those signals in a manner most suited for the application.

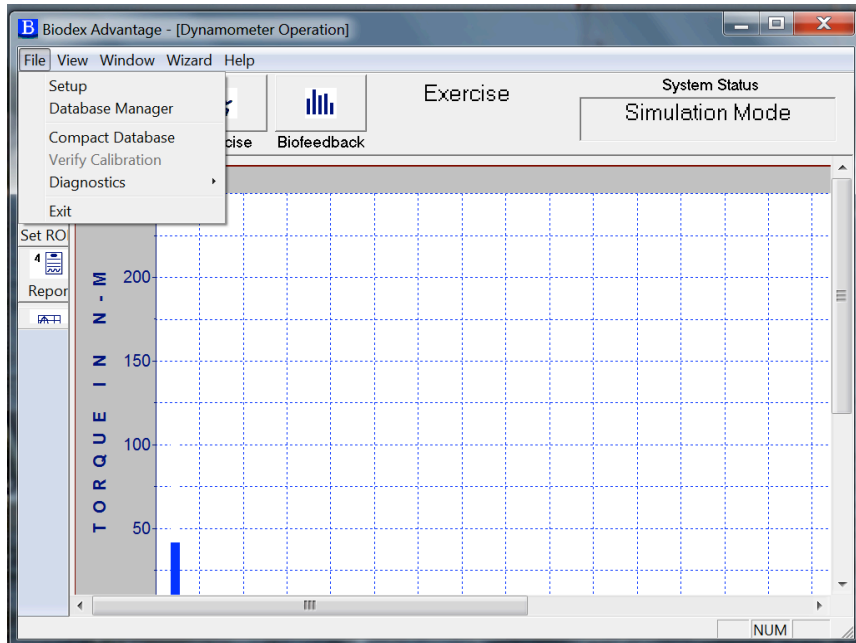
The RS-232 settings required are as follows:

19.2K BAUD, 8 data bits, 1 stop bit, no parity, no handshake

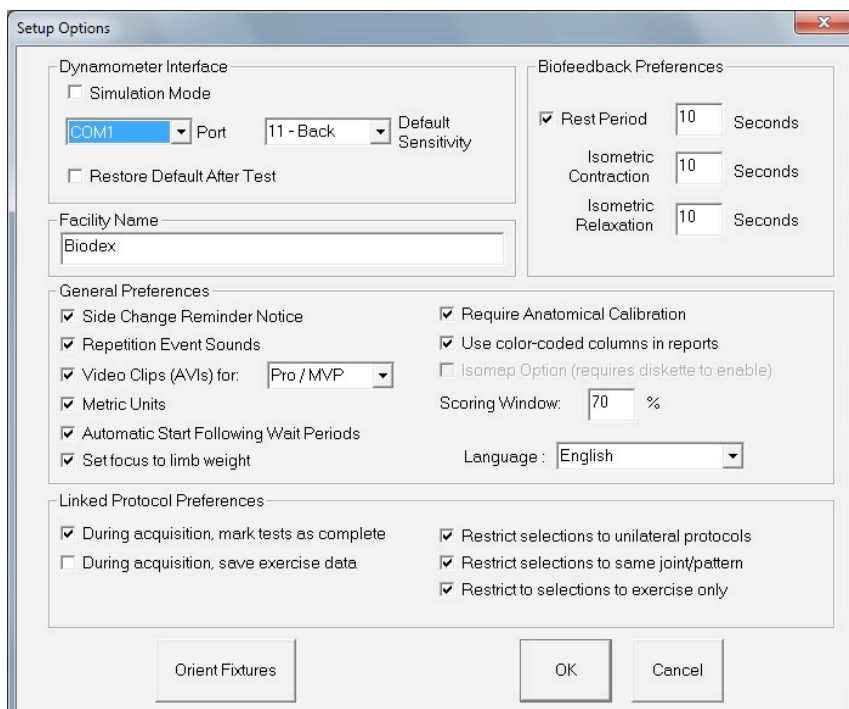
Minimum computer requirements (which the Biodex System 3 or 4 computer meets)
32 bit version of Windows (95/98/NT/2000/XP, Win 7), a minimum of 128 MB of memory (256 MB for 2000 and XP), and 2-3 MB of available disk space. The software is installed from CD via a SETUP program which will guide you through the process.

2. Installation

The ASA Utility software should be installed onto the System 3 or System 4 computer. Prior to installation, you should exit the Biodex application and verify which Serial Com port is used by the Biodex. The ASA Utility needs to have the same COM port selected to work as intended. Go to the Setup options in the Biodex application.

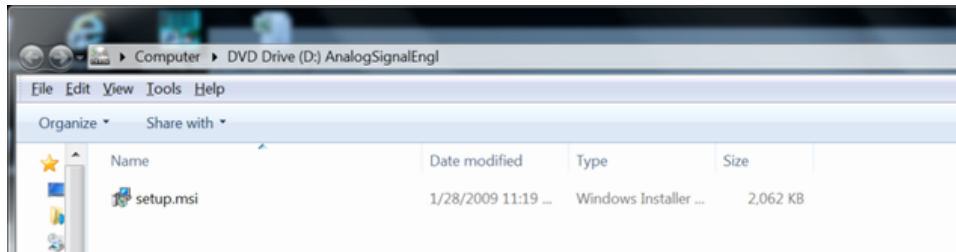


NOTE: The Biodex application is using COM1.

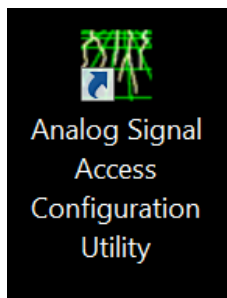


Select Cancel and exit the application.

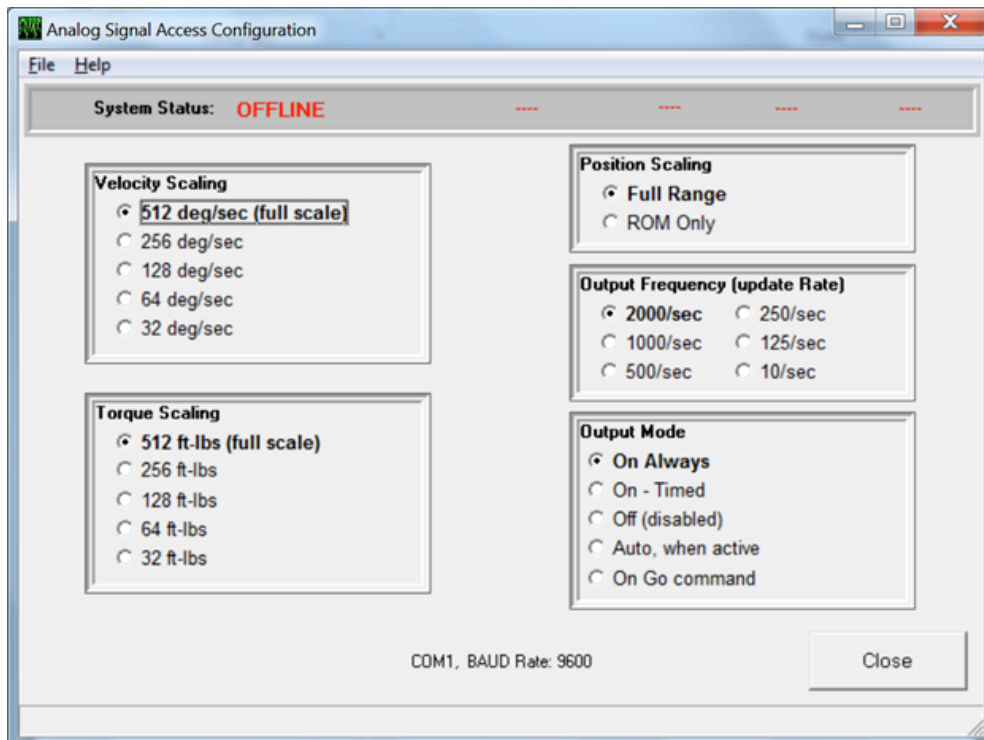
To install the ASA Utility software, place the installation CD in the DVD/CD ROM Drive. Click on the setup.msi file to install. Follow the set-up wizard prompts to install.



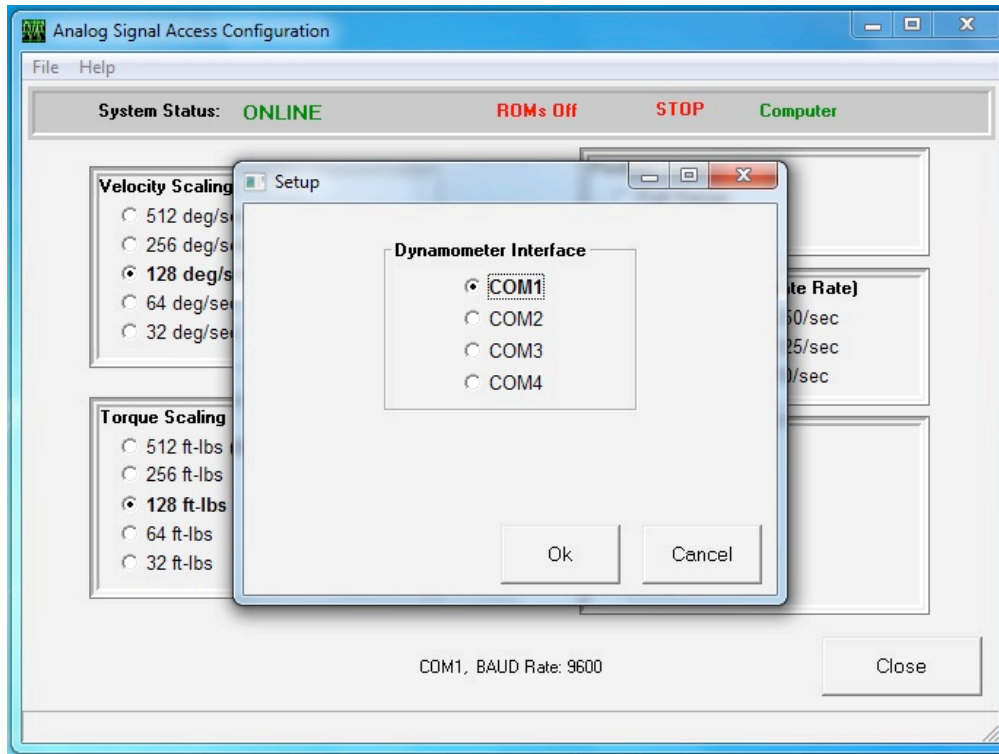
Once installed, a short cut will be created on the desktop. Click on the program icon to open.



You will see System Status is OFFLINE.

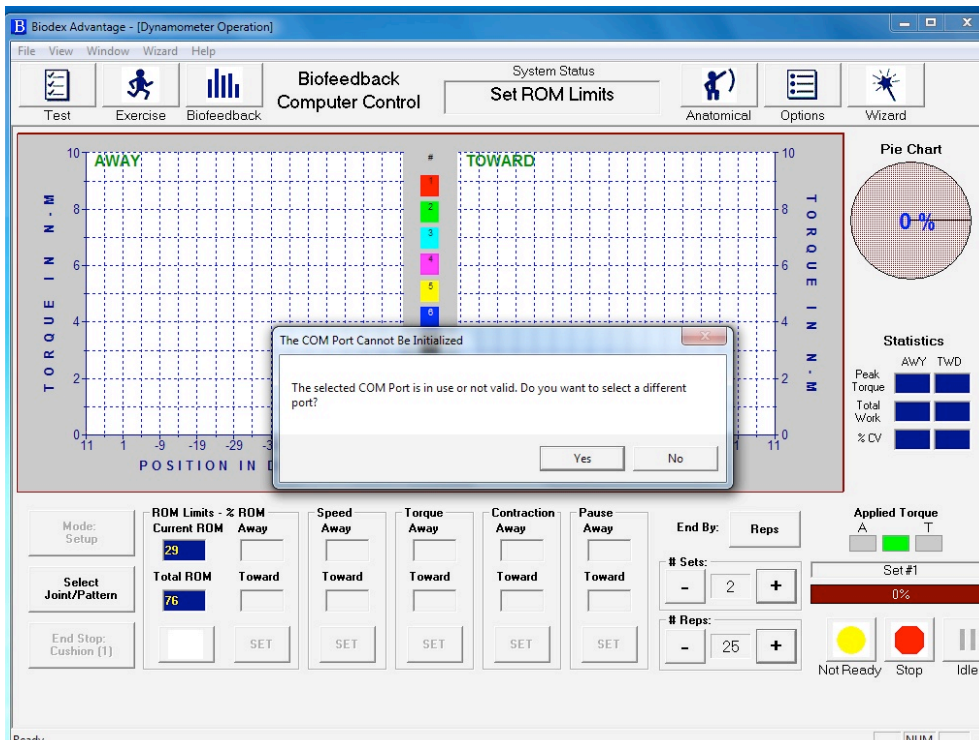


Click on File, and select COM 1—the port that was identified earlier.



Mismatched COM ports is a common mistake in this process.

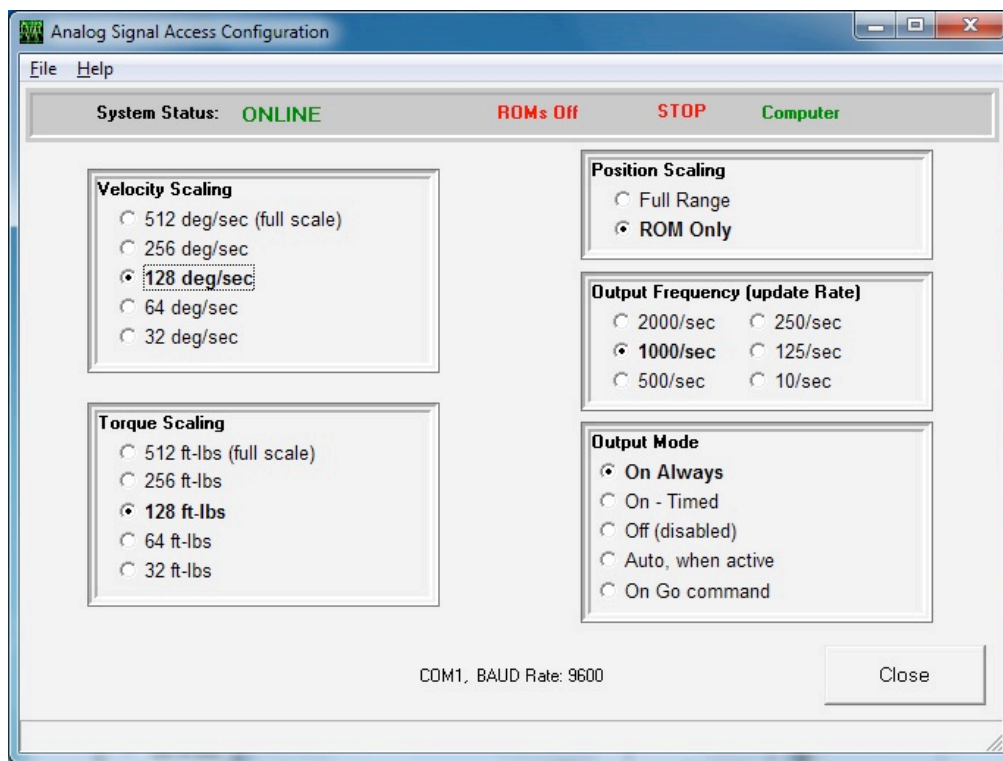
A message like this will appear, prompting the selection of a different COM port.



Once you are ONLINE, make your scaling selections and exit the ASA Utility. Again, the System 3 or 4 Application software and the ASA Utility are not intended to run together.

Once the settings are made, the ASA Utility will be permanently set in the System 3 or 4, even if the unit is completely shut down and re-started. The current settings can always be verified by running the utility - it will show the current active settings. Status information on the System is shown on the top of the screen for your reference. As long as the status shows ONLINE, the current displayed Analog Signal settings are accurate.

The Signal Settings



Analog Signal Resolution Effected By Scale Factor

The analog signals range from -5 volts to +5 volts, resulting in a total range of 10 volts. With the standard Remote Access option available on a System 3 or 4 Rev 2, all analog output signals are at full scale (full scale being the default). Full scale for torque as an example is -512 ft-lbs to +512 ft-lbs, for a total range of 1024 ft-lbs. This results in an output resolution scale factor as follows:

$$\begin{aligned} 1024 \text{ ft-lbs} &= 10 \text{ volts,} \\ 1 \text{ ft-lb} &= 9.8 \text{ milli-volts} \end{aligned}$$

9.8 milli-volts is well below the signal noise rated for this port, therefore it is not possible to see 1 ft-lb increments on this analog signal. The utility provides scaling options separately for all three analog signals, so if typical usage is well below the maximum levels, 1 ft-lb increments can be seen on typical analog monitoring equipment. For example, applying a range of +/- 0 to 64 ft-lbs, the output resolution scale factor would look as follows:

$$\begin{aligned}128 \text{ ft-lbs} &= 10 \text{ volts,} \\1 \text{ ft-lb} &= 78.1 \text{ milli-volts}\end{aligned}$$

78.1 milli-volts is well above the worst case of signal noise (15 - 35 mV), so increments as low as ¼ to ½ ft-lbs can be seen reliably.

3. Operating Modes

The Output Frequency, or update rate, controls how frequent the System will change the analog outputs. The highest update rate is 2,000 times per second, which is the default. If this high frequency is not needed or may even be causing problems with the monitoring equipment, the update rate can be lowered. Every time the analog signals are output, the synchronization signal is pulsed also. Therefore the update rate controls how frequent the synchronization signal is pulsed.

The Output Mode selects in what state the analog signal outputs are updated. The Options are as Follows:

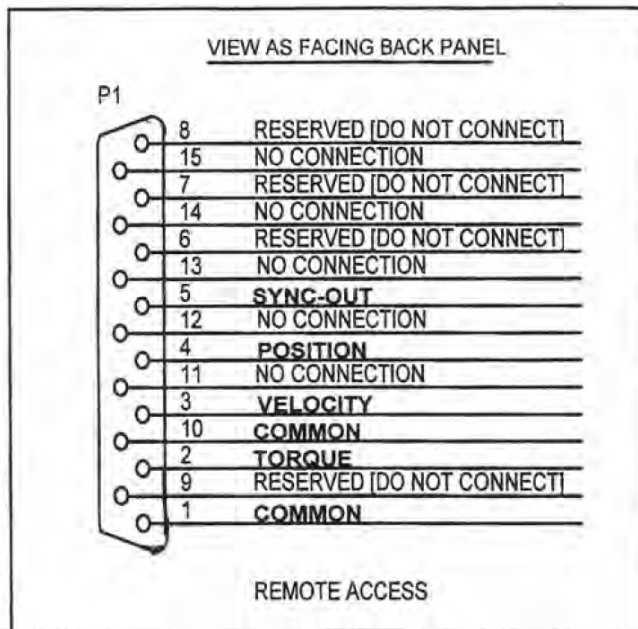
- On Always** - always output irregardless of current operational state
- On Timed** - turns on analog outputs only for the next fixed period of time (in seconds)
- Off (disabled)** - totally shuts down the analog signal outputs
- Auto, when active** - is automatically on only when the system is in an active state, meaning not STOP'ed and not in HOLD
- On Go command** - synchronizes the analog signal output with the System 3 application's GO command, so the output is performed only during the trials exercised

Table of Scale Range and Factors

Scaling Option	Range	Scale Factor
Velocity:		
0 – 512 deg/sec	-512 to +512 deg/sec	9.8 mV per deg/sec
0 – 256 deg/sec	-256 to +256 deg/sec	19.5 mV per deg/sec
0 – 128 deg/sec	-128 to +128 deg/sec	39.1 mV per deg/sec
0 – 64 deg/sec	-64 to +64 deg/sec	78.1 mV per deg/sec
0 – 32 deg/sec	-32 to +32 deg/sec	156.3 mV per deg/sec
Torque:		
0 – 512 ft-lbs	-512 to +512 ft-lbs	9.8 mV per ft-lb
0 – 256 ft-lbs	-256 to +256 ft-lbs	19.5 mV per ft-lb
0 – 128 ft-lbs	-128 to +128 ft-lbs	39.1 mV per ft-lb
0 – 64 ft-lbs	-64 to +64 ft-lbs	78.1 mV per ft-lb
0 – 32 ft-lbs	-32 to +32 ft-lbs	156.3 mV per ft-lb
Position:		
Full scale (~ 306 degrees)	0 to 306 degrees	29.2 mV per degree
ROM Only (varies)	Ex: 45 degrees	Ex: 198.7 mV per degree

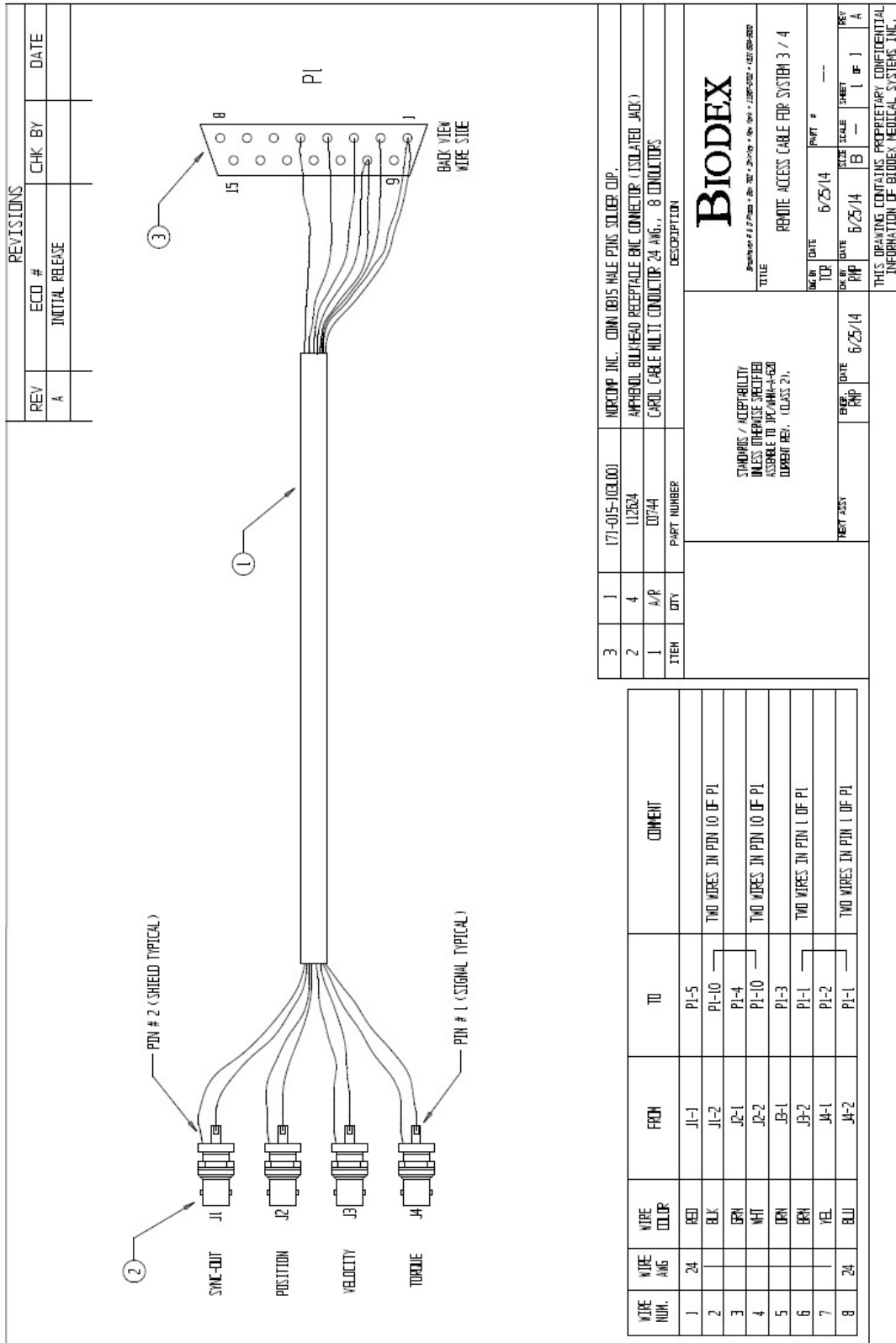
There are many different types of devices that someone could connect to. As such, we provide the “pin outs” and leave it up to the end user to make the interface cable. Because of the popularity of this application, many companies have cables available for their devices. You may want to check with your particular interface device manufacturer. If not, you can make a cable to communicate if you know the other device's connections.

The connection is labeled REMOTE ACCESS on the back of the Biodex CDS cart. It is a DB-15 female connector.



PIN #	DESIGNATION	DESCRIPTION
1	Common	Signal ground
2	Torque	Analog torque signal
3	Velocity	Analog velocity signal
4	Position	Analog position signal
5	Syncout	TTL pulse
6-9	reserved	Do not connect!
10	Common	Signal ground [same as pin 1]
11-15	not connected	

BNC Cable example.



3	1	171-015-103.001	MURKOP, INC. CONN (B) IS MALE PINS SOLDER CUP.
2	4	112624	APPROX. BULK-HEAD RECEPTACLE BNC CONNECTOR (ISOLATED JACK)
1	A/R	00744	CAROL CABLE MULTI CONDUCTOR 24 ANG., 8 CONDUCTORS
ITEM	QTY	PART NUMBER	DESCRIPTION
			BIODEX
			<small>Part Number # 171-015-103.001 • Rev. 02 • 2/1/10 • No. 001 • 128P-512 • 427.00-007</small> TITLE REMOTE ACCESS CABLE FOR SYSTEM 3 / 4 <small>ING. BY DATE 6/25/14 PART # ---</small> <small>DR. BY DATE 6/25/14 SIZE SCALE SHEET 1 OF 1 REV A</small>
			<small>STANDARD / ACCEPTABILITY UNLESS OTHERWISE SPECIFIED ASSEMBLE TO JWG/AMA-4-600 CURRENT REV. (CLASS 2).</small> TEST Assy DATE 6/25/14 <small>EXP. DATE 6/25/14</small>

WIRE NUM.	WIRE ANG	WIRE COLOR	FROM	TO	COMMENT
1	24	RED	J1-1	PI-5	
2		BLK	J1-2	PI-10	TWO WIRES IN PIN 10 OF PI
3		GRN	J2-1	PI-4	
4		WHT	J2-2	PI-10	TWO WIRES IN PIN 10 OF PI
5		BRN	J3-1	PI-3	
6		BRN	J3-2	PI-1	TWO WIRES IN PIN 1 OF PI
7		YEL	J4-1	PI-2	
8	24	BLU	J4-2	PI-1	TWO WIRES IN PIN 1 OF PI

Specifications:

Accuracy: $\pm 2\%$.

Resolution: 16 Bits.

Minimum Vout Increment: 152.5uv

Signal Noise:

15 mVrms [20KHz Bandwidth].

35 mVpp [20 μ S minimum, 150 μ S maximum width].

Response Time: 500 μ S.

Connector: DB-15 male "D" Connector.

Output Short Circuit Duration: Infinite.

Output Impedance: 100S

Individual Signals

Torque* Analog torque signal

5 volts is cw torque (512 ft-lbs)

0.0 volts is 0 ft-lbs

-5.0 volts is ccw torque (512 ft-lbs)

Scale Factor= 9.76 mV/ft-lbs.

Velocity Analog velocity signal

5 volts is full scale cw speed (512 deg/sec)

0.0 volts is 0 deg/sec

-5.0 volts is full scale ccw speed (512 deg/sec)

Scale Factor= 9.76 mV/[deg/sec]

Position Analog position signal

4.60 volts is when dyna shaft is fully cw

-4.28 volts is when dyna shaft is fully ccw

Scale Factor= 28.7 mV/[deg]

Total ROM is 306 degrees; Total Vout =8.88V

Synchronization Digital TTL pulse

Active High

29 μ s Pulse width Continuous

Indicates voltage output update, [\sim 2KHz], mode dependent

BIODEX

Biodes Medical Systems, Inc.

20 Ramsey Road, Shirley, New York, 11967-4704, Tel: 800-224-6339 (Int'l 631-924-9000), Fax: 631-924-9241, Email: info@biodes.com, www.biodes.com