

SIT2STAND™ SQUAT-ASSIST TRAINER

INSTALLATION AND ASSEMBLY GUIDE

950-560-10



BIODEX

Biodex Medical Systems, Inc.

20 Ramsey Road, Shirley, New York, 11967-4704, Tel: 800-224-6339 (Int'l 631-924-9000), Fax: 631-924-9241, Email: info@biodex.com, www.biodex.com

Sit2Stand™ Squat-Assist Trainer

This instructions for use document covers safe operation of the Sit2Stand Squat-Assist Trainer.

Additional information and resources, such as compliance and clinical support documents, are available upon request or directly from the Biodex website: www.biodex.com.

If the desired information is not found, Biodex can be contacted directly at supportservices@biodex.com

Thank you,

Biodex Medical Systems, Inc.

Contact information



Manufactured by:

Biodex Medical Systems, Inc.
20 Ramsey Road, Shirley, New York, 11967-4704
Tel: 800-224-6339 (Int'l 631-924-9000)
Fax: 631-924-8355
email: supportservices@biodex.com
www.biodex.com

Table of Contents

1.	Accessories	4
2.	Assembly Instructions.....	5
	Handle Assembly (950-560-A080).....	5
	Male Tube Subassembly (950-560-A040)	5
3.	Installing the Gas Spring	9
4.	Maintenance	10
	Disposal	10

1. Accessories

The following accessories come packaged with the Sit2Stand Trainer:

Table 1-1. Accessory Parts

QTY	PART NUMBER	DESCRIPTION
1	C1368	1/8 Allen Wrench
1	950-560-M385	Gas Spring Mounting Block
1	C12636	Adhesive, Loctite 243 Blue CPSL, 5ml
1	950-560-A080	Male Tube Subassembly
2	950-560-A080	Handle Assembly
1	950-560-M331, C12505, C13949, C14123	Round Bumper Stop Assembly
3	C11134	Screw, BTN HD, SOC, 10-32 X .50", ZPS
1	C11730	Grease, Super Lube PTFE, .5oz

2. Assembly Instructions

Handle Assembly (950-560-A080)

To attach each Handle Assembly, align the Handle groove with the tip of the Spring Loaded Plunger and insert the Handle into the opening until it “clicks” closed. See photos below.



Figure 2.1. Properly Orientated Handle Assemblies.

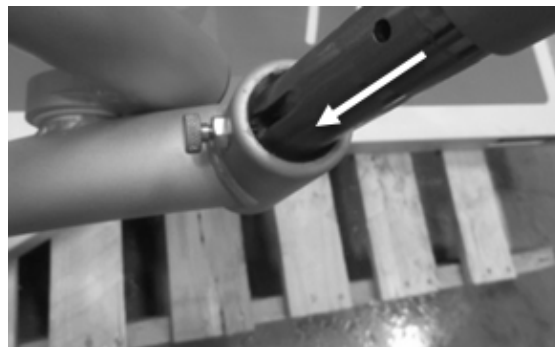


Figure 2.2. Align Plunger with Handle Groove, Insert Handle Assembly, and Tighten Screw.

Male Tube Subassembly (950-560-A040)

The Gas Spring and Mounting Block Stopper are preinstalled into the bottom of the Male Tube Subassembly.



Figure 2.3. Gas Spring/Mounting Block Stopper (Left), Gas Spring with Mounting Block (Center), and Mounting Block Stopper (Right).

When installing the Male Tube Subassembly, be careful not to dislodge the Bushing Front Guide with Cutout, which is glued into the bottom of the Seat Female Tube Assembly.



Figure 2.4. Bushing Front Guide with Cutout (Left), Seat Female Tube Assembly (Center), Bushing Glued into Bottom of Tube (Right).

NOTE: Do not remove the Gas Spring Mounting Block Stopper until after the Male Tube Subassembly has been secured to the Seat Female Tube Assembly. If it is ever dislodged, refer to Chapter 3 for instructions on reinstalling the Gas Spring and Gas Spring Mounting Block.

Apply a liberal amount of Super Lube Grease to the shaft of the Male Tube Subassembly. Pull on the Seat Female Tube Assembly Knob and insert the shaft into the opening. Release the knob so that it engages in the first hole of the shaft.

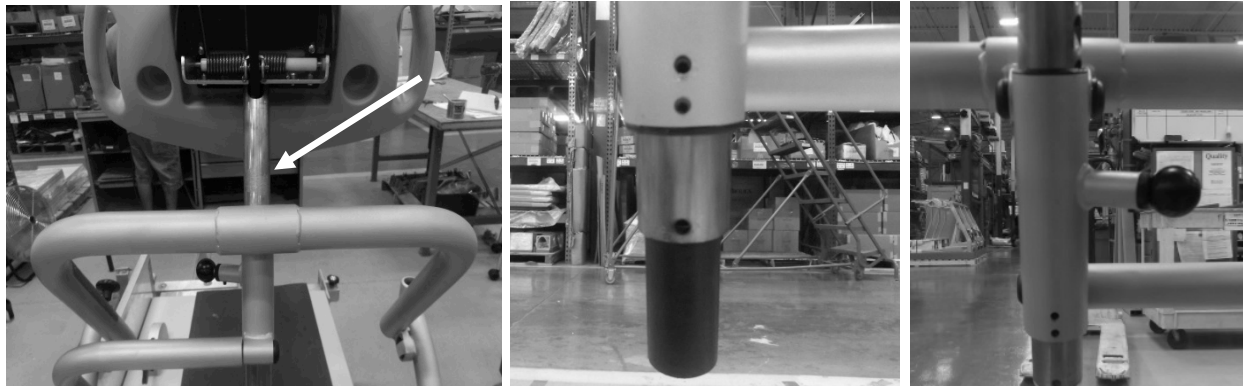


Figure 2.5. Grease the Shaft of the Male Tube Subassembly (Left), Inserting the Male Tube Subassembly (Center), and Engaging the Knob in the First Hole of the Shaft (Right).

Ensure that the Gas Spring Mounting Block screw holes are clearly visible and lined up evenly with the holes of the Seat Female Tube Assembly (see left and center pictures in Figure 2.6).

Using the 1/8 Allen Wrench, thread two 10 x 32 screws into the holes of the Gas Spring Mounting Block (see center and right pictures in Figure 2.6).

When finished screwing in the two screws remove the Mounting Block Stopper from the end of the Male Tube Subassembly (see picture at right in Figure 2.6).

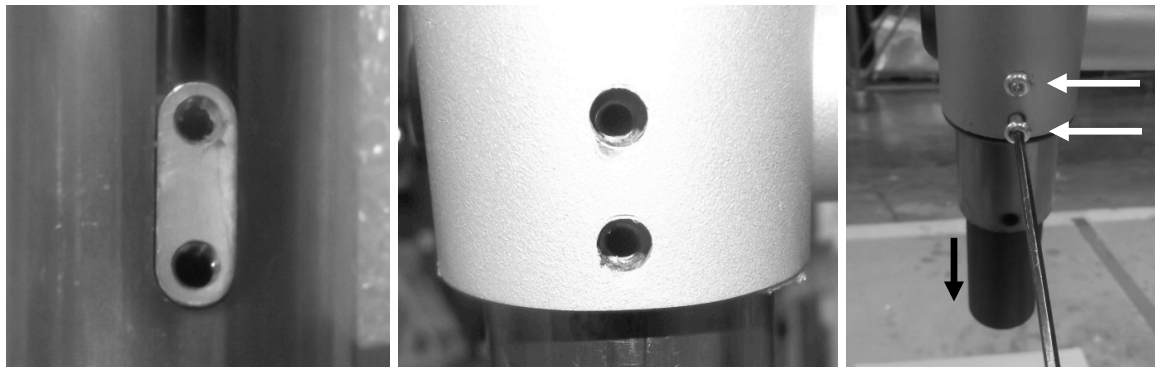


Figure 2.6. Gas Spring Mounting Block Screw Holes (Left), Seat Female Tube Assembly Screw Holes (Center), and Two 10 × 32 Screws along with Mounting Block Stopper (Right).

Apply a small amount of Super Lube Grease to the rubber seal of the Rubber Bumper Stop and insert it into the bottom opening of the Male Tube Subassembly.

Ensure that the Rubber Bumper Stop screw hole is clearly visible and lined up with the hole of the Male Tube Subassembly and then secure the Round Bumper Stop using one 10 x 32 screw.

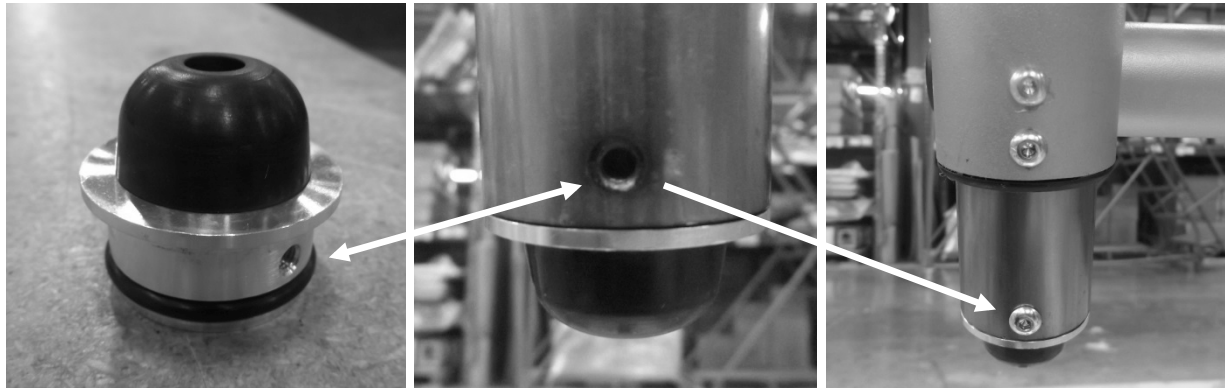


Figure 2.7. Rubber Bumper Stop (Left), Rubber Bumper Stop with Screw Hole Aligned with Seat Male Tube Assembly Screw Hole (Center), and a 10 x 32 Screw to Secure Rubber Bumper Stop (Right).

NOTE: This completes the installation and assembly of the Sit2Stand Trainer. For further instruction on the operation of the Sit2Stand Trainer see both the Sit2Stand Trainer IFU as well as the Sit2Stand eLearning course at www.biodex.com.

3. Installing the Gas Spring

When required, reinstall the cartridge end of the Gas Spring into the back hole of the Male Tube Subassembly (see Figure 3.1).

Use a screwdriver to compress the Gas Spring. With the screw holes facing out, insert the Mounting Block into the slot of the Male Tube Subassembly. Ensure that the Mounting Block is flush with the surface of the Male Tube Subassembly (see left and center pictures in Figure 3.2).

Reinstall the Mounting Block Stopper into the Male Tube Subassembly (see picture at right in Figure 3.2). Refer to the steps outlined in Chapter 2 subsection “Male Tube Subassembly (950-560-A040)” to install the Male Tube Subassembly into the Seat Female Tube Assembly.

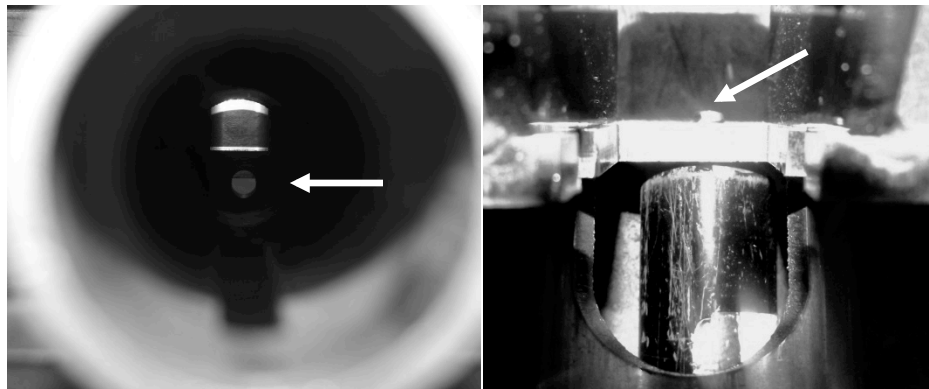


Figure 3.1. Hole at Back of Male Tube Subassembly (Left) and Properly Seated Gas Spring Tip (Right).



Figure 3.2. Mounting Block Engaged in Slot (Left), Mounting Block Flush in Slot (Center), and Male Tube Subassembly Shaft with Mounting Block Stopper (Right).

4. Maintenance

The seat pad can be removed, cleaned, and reinstalled. To clean, use a spray disinfectant and wipe the pad dry with a dry cloth or paper towel.



Figure 4.1. *The Seat Pad can be Removed and Re-attached for Cleaning.*

Disposal

An appropriate waste disposal company is to be contacted (i.e., the local collection point for waste separation). Properly dispose of the device at the end of its service life:

- The device packaging is disposed of through resource recycling.
- The metal parts of the machine go to scrap metal disposal.
- Plastic parts are disposed of as hazardous waste.



The disposal of equipment must be in accordance with the respective national regulations.

Wear parts are considered hazardous waste! After being replaced, wear parts must be disposed of according to country-specific waste laws.

BIODEX

Biodex Medical Systems, Inc.

20 Ramsey Road, Shirley, New York, 11967-4704, Tel: 800-224-6339 (*Int'l 631-924-9000*), Fax: 631-924-9241, Email: info@biodex.com, www.biodex.com

