

DOWNLOAD INSTRUCTIONS SOFTWARE UPGRADE v3.0X

FOR BALANCE SYSTEM SD AND BIOSWAY

950-440
950-441
950-444
950-460
950-461



BIODEX
Biodex Medical Systems, Inc.

20 Ramsey Road, Shirley, New York, 11967-4704, Tel: 800-224-6339 (Int'l 631-924-9000), Fax: 631-924-9338, Email: info@biodex.com, www.biodex.com

This manual covers download procedures for the following software:

Software Upgrade v3.0X for the Biodex Balance SD and Biodex BioSway. The letter 'X' is used throughout this document to denote the latest version number of the software. Check <http://biodex.com/physical-medicine/products/software-updates> for the latest software updates.

This software can be used with the following products:

Version 3.0X of the Balance System SD and BioSway software can only be used on units with 12-inch displays. For any other size display, please contact Biodex Customer Service.

Balance System SD

950-440 Balance System SD 115V (12.1" LCD)

950-441 Balance System SD 230V (12.1" LCD)

950-444 Balance System SD 100V (12.1" LCD)

BioSway

950-460 BioSway Balance System w/ Case (12.1" LCD)

950-461 BioSway Balance System w/o Case (12.1" LCD)



Need Help?
Contact Biodex Software Support
1-800-224-6339 ext 2120 or
softwaresupport@biodex.com

Download Instructions – Software 3.0X For Balance System SD and BioSway

On the Biodes website, Physical Medicine section, navigate to the ‘**Software Updates**’ page under ‘**Products**’ in the left navigation bar, and select either Balance System SD v3.0X or BioSway v3.0X Software. This will bring up the page with a “**download**” button (See Figures 1 and 2) and follow the steps mentioned below:



Figure 1. Balance System SD Software Download screen

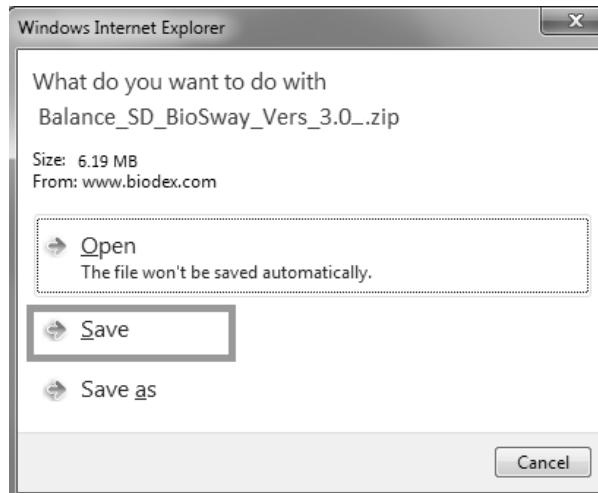


Figure 2. BioSway Software Download screen

How to Download:

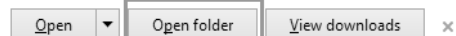
NOTE: Snapshots used in this document, downloading the software from website, will match if Internet Explorer 10 and/or 11 is used. Using other browsers will vary the screenshot.

1. Click on the “DOWNLOAD” button to download the software.
2. A “File Download” dialog box will appear.

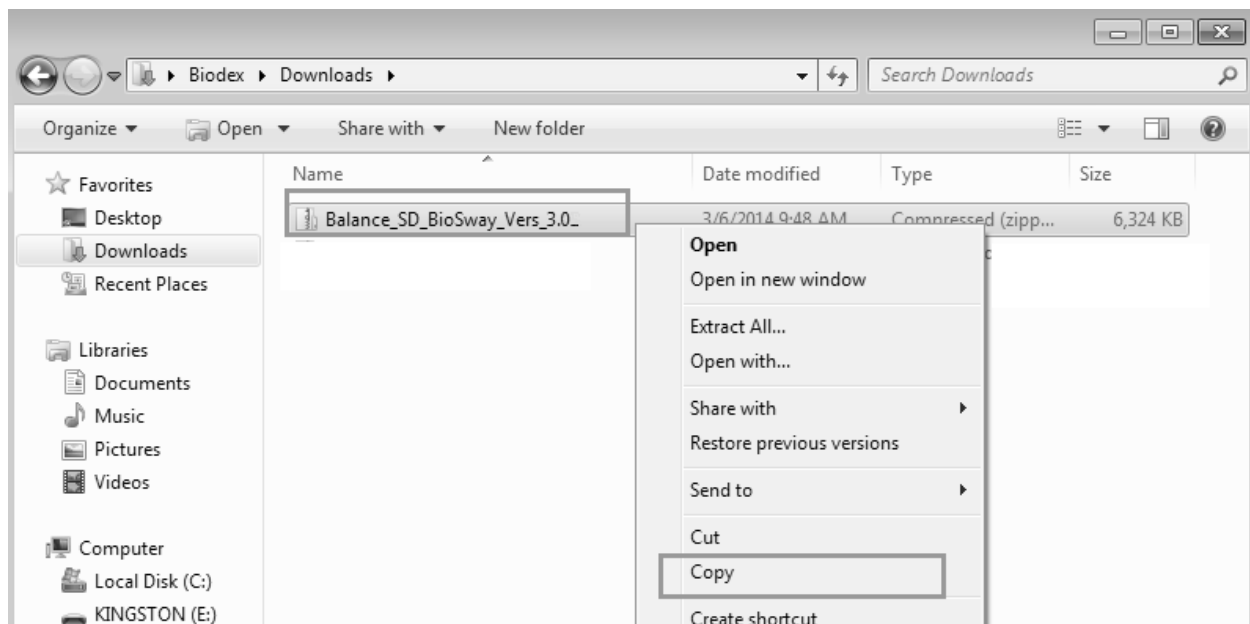


3. Once the download is complete, Open the folder or go to the Downloads folder on your computer.

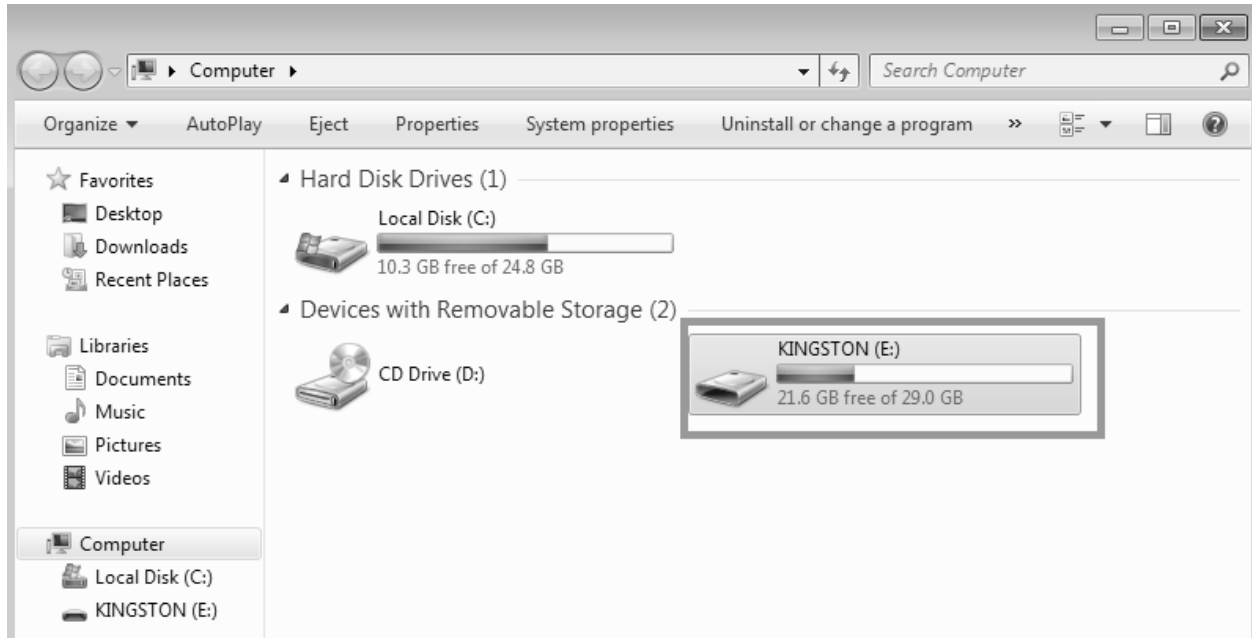
The Balance_SD_BioSway_Vers_3.0_.zip download has completed.



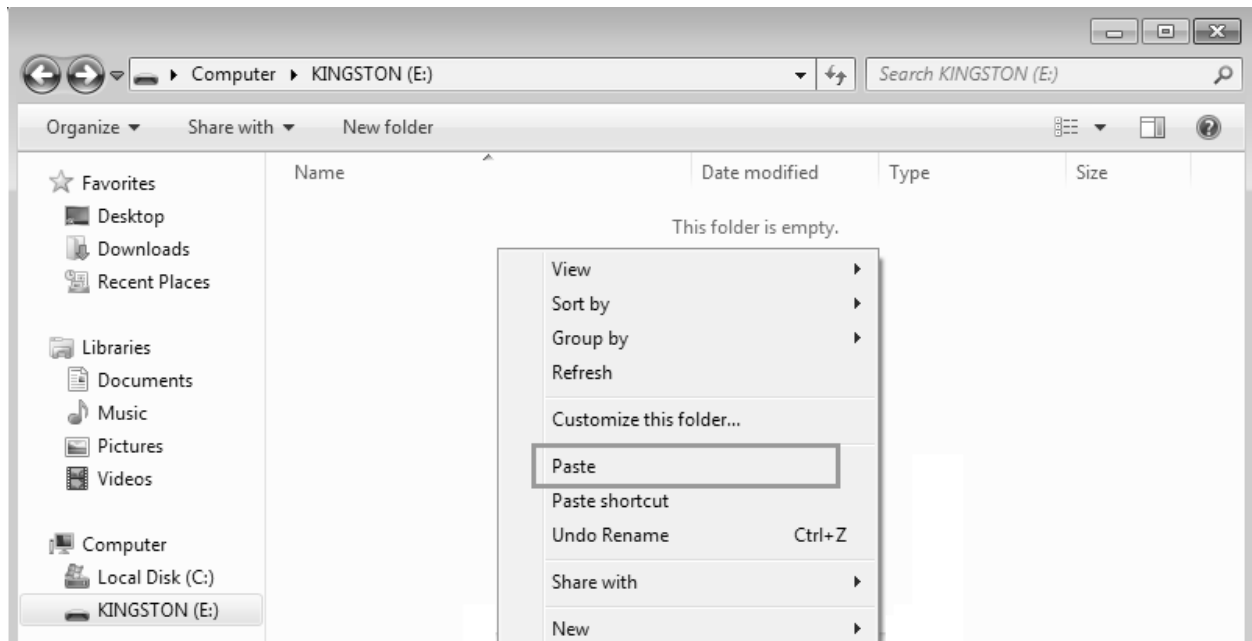
4. Select the file that was just downloaded. (Do **NOT** extract yet.) Choose the **COPY** option.



5. Insert Flash Drive and take note of what drive letter is assigned to it.
(In this example we are using the “E” Drive.)
The location may come up as Drive “D”, “E”, “F”, “G”, etc.
6. Open My Computer and select the Flash Drive.

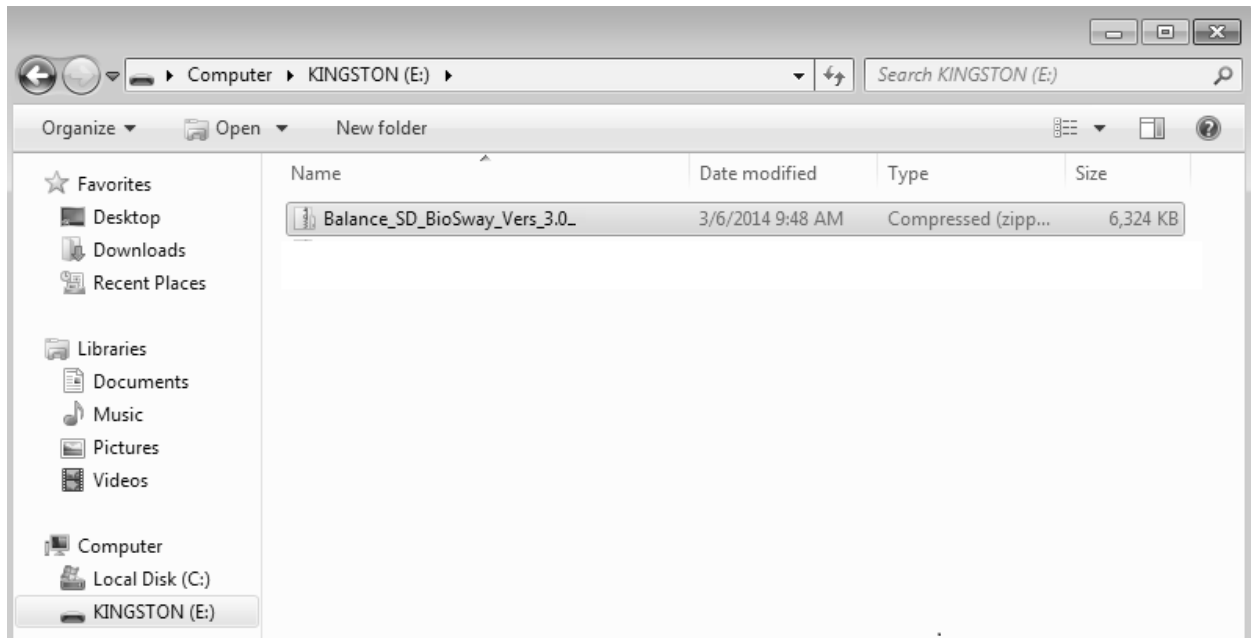


7. Place mouse in center of screen.
Select **PASTE** option.
Zipped File is copied to Flash Drive.

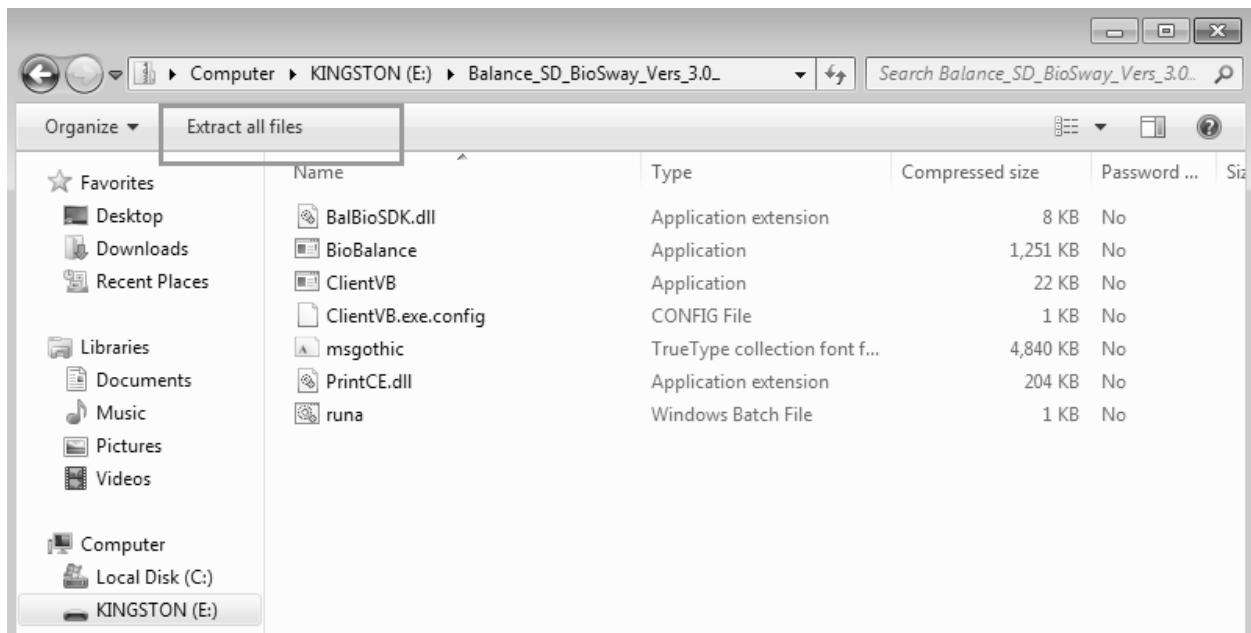


NOTE: It is important to extract the files on the Flash Drive.

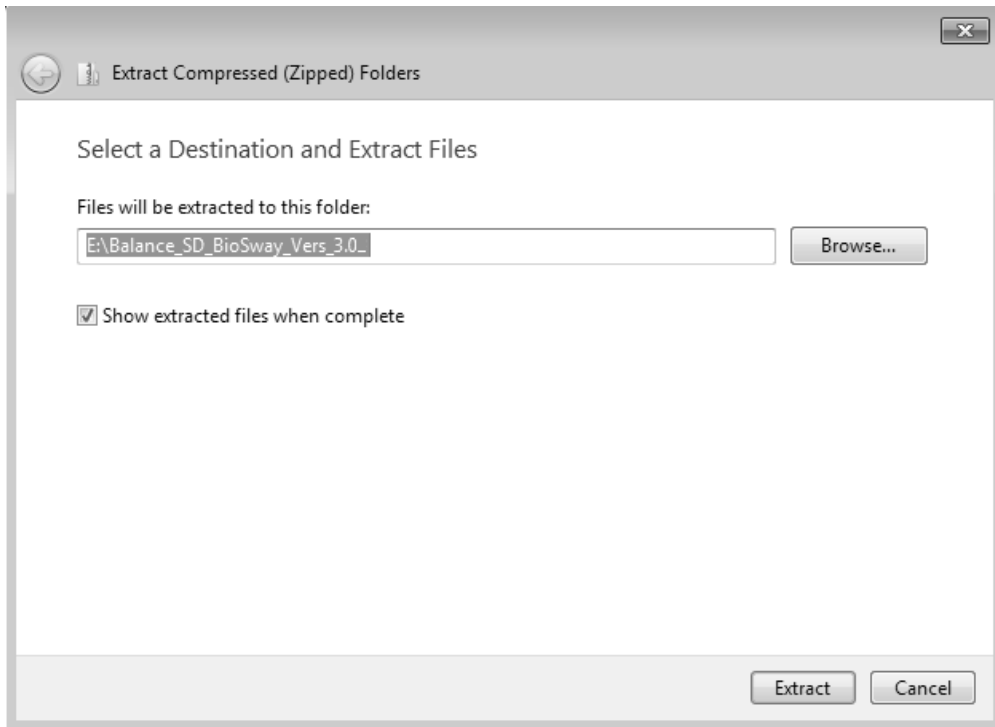
8. Select the zip file



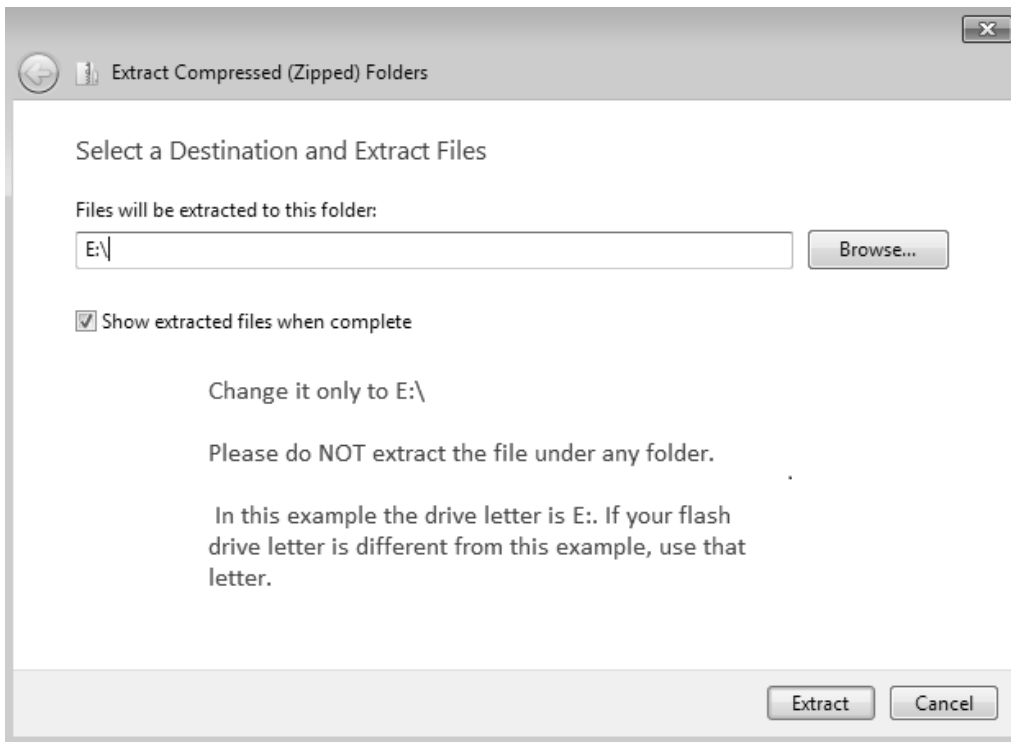
9. Select EXTRACT ALL FILES.



10. Type E:\; Select EXTRACT.

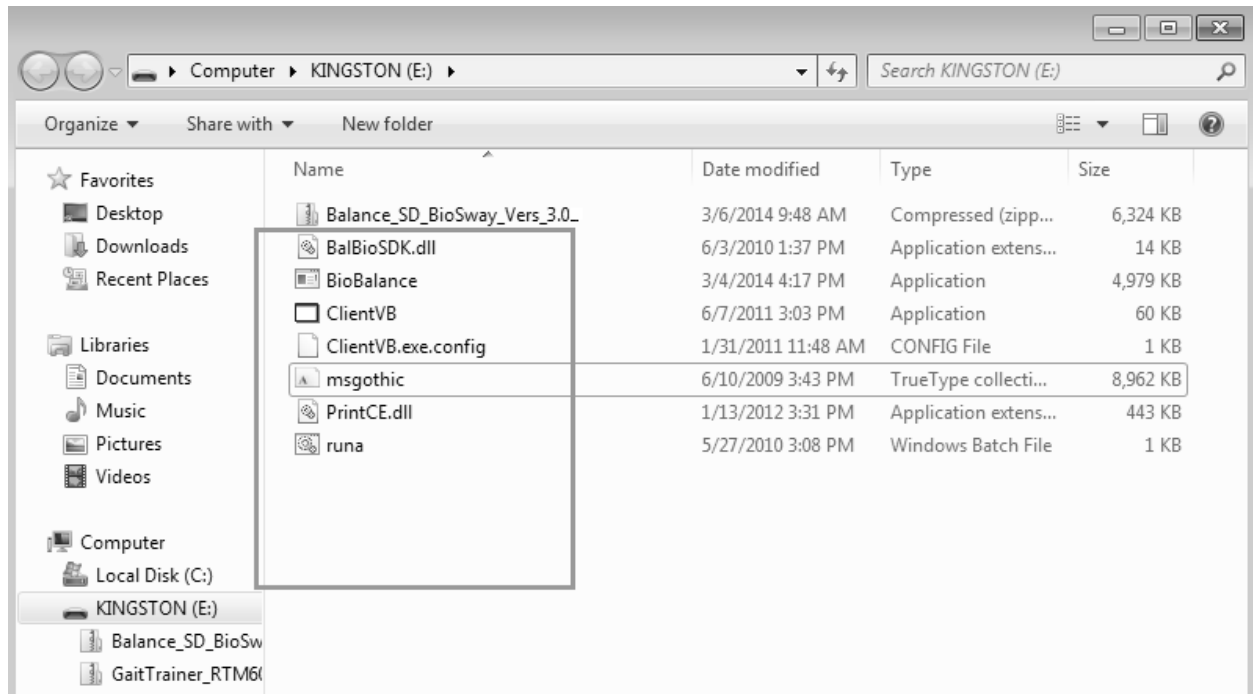


Make sure you type the drive letter (E), a colon (:), and a backslash (\)
E:\ refers to the ROOT of the flash drive

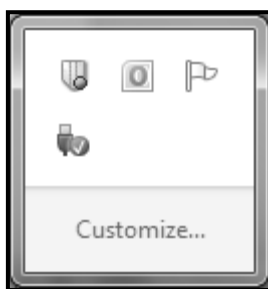


The files will be extracted to the root of the flash drive. It should look like the following figure.

IMPORTANT: System will not recognize the updates if they are NOT in the root of the Flash Drive.



11. Copy is now completed.
12. Close any open windows.
13. Select icon to Safely Remove Hardware (located in lower right hand corner of Desktop)
14. Choose to remove Flash Drive.



15. Plug in the USB Flash Drive to the Balance System SD or BioSway display. The unit will automatically detect the software update and display a message on the screen. You will be prompted for automatic update of Balance System SD and/or BioSway software.

BIODEX
Biodex Medical Systems, Inc.